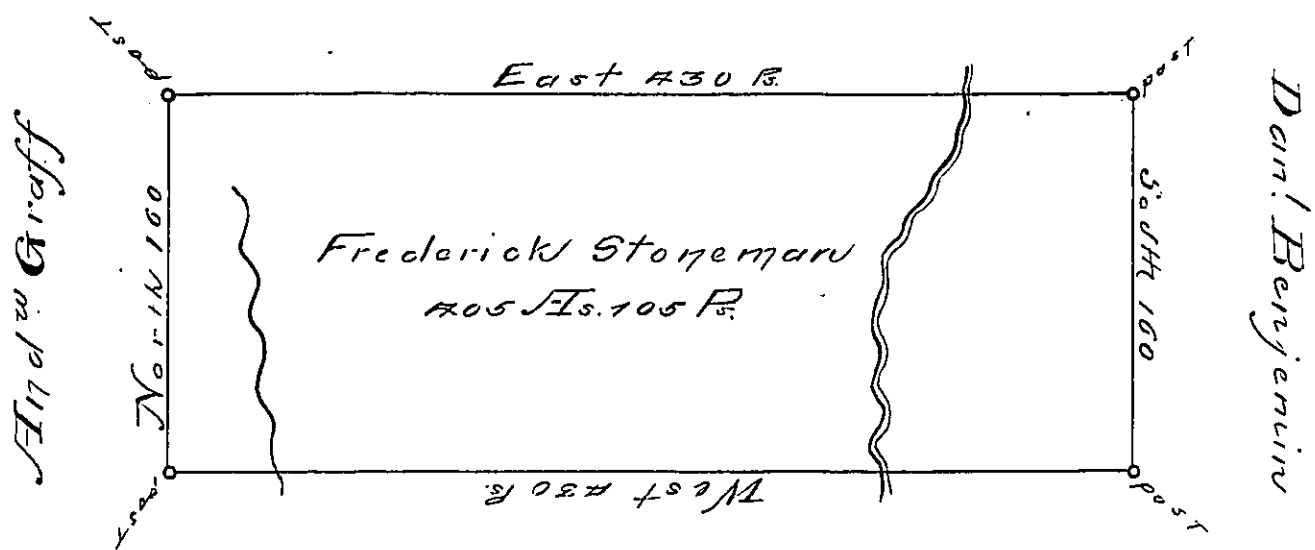


Jacob Krug



John Flambricht

Situated on Blacklick Creek in Wheatfield Township Westmoreland County containing 405 Acres & 105 perches & all awaves of six p. Cent for Roads &c. Surveyed for Frederick Stoneman the 20th day of Novm^r 1794 on Warrant dated the 30th day of May 1793.

Daniel Broadhead Esq.

James Ross Esq.

IN TESTIMONY that the above is a copy of the original remaining on file in the Department of Internal Affairs of Pennsylvania, made conformably to an Act of Assembly approved the 16th day of February, 1833, I have hereunto set my Hand and caused the Seal of said Department to be affixed at Harrisburg, this

— thirtieth — day of — March — 1894

Geo. Stewart
Secretary of Internal Affairs.